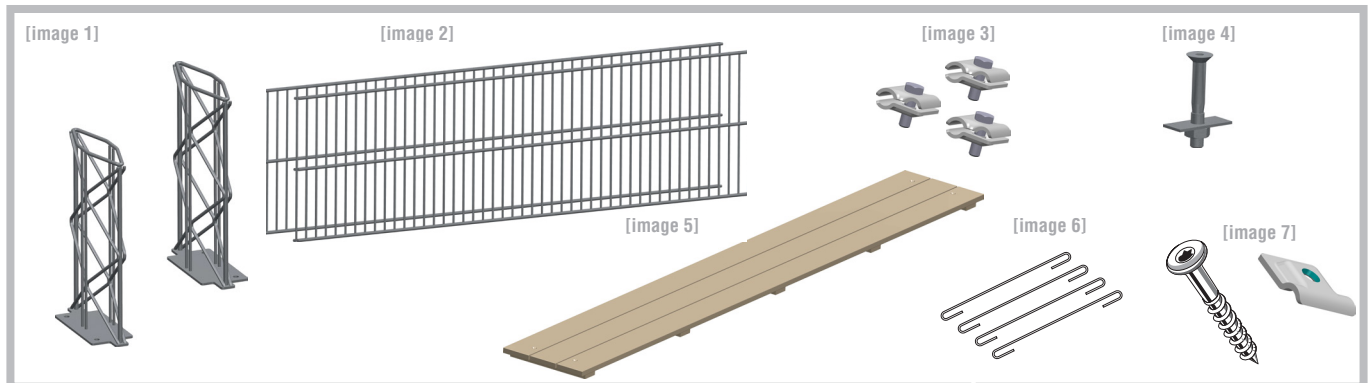


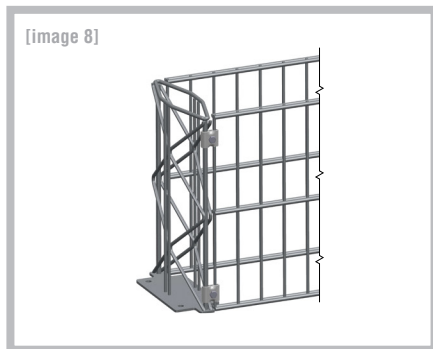
Assembly Instructions

PERGONE® BENCH

arcadia®



The assembly instructions are for the attention of the qualified skilled worker possessing the required level knowledge to carry out safe and professional construction. In case one of these qualifications is not held, please get in contact with a specialist assembly company. Proper assembly involves sufficient compression of the ground between the deep foundations and compression of the filling material by lightly tapping on the double rod gratings with a rubber mallet. For soil and substructures that are prone to settling, we recommend mounting a covering for Pergone® 23 cm at the bottom. The scope of supply of the Pergone® bench includes the following: 2 columns with socket [image 1], 2 double rod gratings [image 2], 8 universal fixing clip sets, triple [image 3], 10 spacers [image 6], 1 WPC board [image 5], 1 set of stainless steel fixing material (4 countersunk screws M10x70 mm, 4 nuts M10, 4 clamping plates [image 4], 2 WPC clips (2 clip overlays, double, incl. 2 clamp plate screws Torx stainless steel 5x35) [image 7], 1 optional Pergone® 23 cm cover mat. Please check prior to assembly that your scope of delivery is complete.



Screw the double rod gratings to the columns. The double rod gratings must be flush with the ground. Mounting is realized using universal clips [image 3] evenly distributed at the top and bottom (tighten hand-tight).

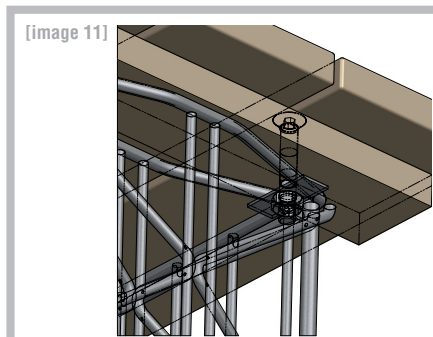


Attach 5 evenly distributed spacers [image 6] in the bottom row.

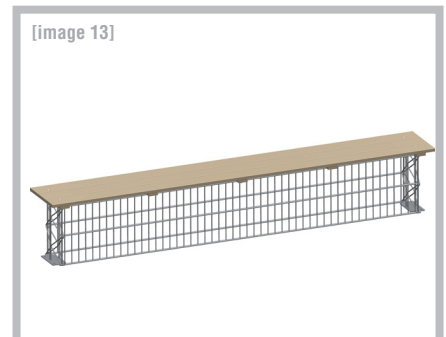
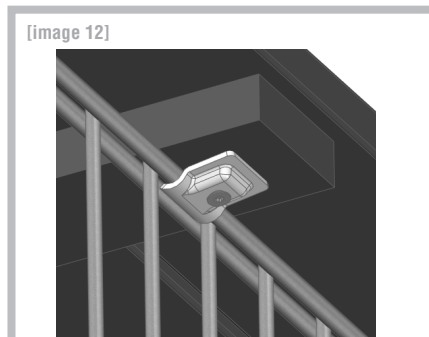


Optional: Optional: The 23 cm Pergone® covering can be placed on the bottom spacers.

Now, the first layer of the filling material (approx. 30 cm high) can be filled in the preassembled bench body up to the remaining 5 spacers [image 6] which are to lie on top of the filling material to attach the double rod gratings. Screw the entire structure tight and fill the bench body up to the top end of the double rod gratings.



Place the WPC board [image 5] on the preassembled bench body and centre it. The WPC board is assembled using the set of fixing material [image 4] and WPC clips [image 7]. Insert the countersunk screw into the bore on the WPC board and attach the clamping plate from the bottom to the column using a nut (tighten hand-tight). Tighten all screws after installation of all sets of fixing material as described. Now, the WPC board can be attached from the bottom to the double rod gratings using the 2 WPC clips at the middle. If necessary, the bench can be anchored to the ground by attaching ground anchors to the provided bores in the socket or anchored on an existing foundation using dowels (ground anchors and dowels are not included in the scope of delivery).



Notice: Written and verbal recommendations (technological application) which are given on the basis of experience and to the best of our knowledge and correspond to the current level of knowledge in science and practical application are not binding and do not represent the basis for any contractual relationship or any further commitments. Under no circumstances is the purchaser of our product released from their obligation to examine the product on their own authority with respect to its suitability and the intended purpose of use. No guarantee is given for misprints and errors. Subject to changes!

State: 05/2018

arcadia®

Asangstraße 16
D - 94436 Simbach

fon +49 9954 70017-70
fax +49 9954 70017-88

mail arcadia@3ks.de
web www.3ks.de/arcadia

3ks®
profile gmbh